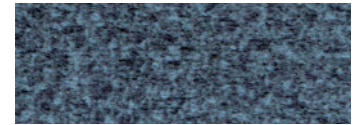




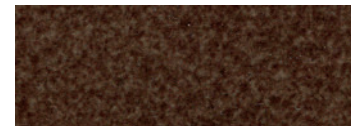
Standard Fabrics:



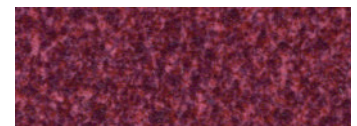
Calypso



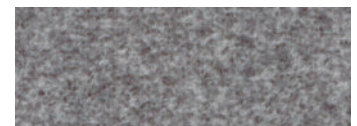
Camel



Hazelnut



Shiraz



Sterling

This fabric has a modern, updated look with rich color options. It features our exclusive SofTouch™ with Stain Defense coating.

*An upcharge will apply for all crossover fabrics.

Standard Features:

- Patented MaxiComfort® Positioning
- Programmable AutoDrive™ Hand Control
- Custom bucket seat
- Extra Pocket
- SmartTek® Diagnostic System

Upgrade Options:

- NEW HeatWave Technology
- Deluxe Therapeutic Heat & Vibrating Massage

**Cloud
PR510**



Comfort Zone™
by GOLDEN

The Cloud™ by Golden is an extremely comfortable and popular power lift recliner featuring hybrid sizing. Offered in two sizes, these chairs offer our unique, ergonomic Cloud seating system and custom bucket seat design for long-term comfort and support. They feature a plush backrest and solid molded high-density arm pillows for the ultimate in relaxation. Enhance your comfort with our NEW HeatWave Technology, with Far-Infrared heat therapy for added well being and relaxation.



FDA Class II Medical Devices designed by Golden Technologies are intended to assist persons with chronic physical disabilities.



MAXICOMFORT® Series PR510



Upgrade with Deluxe Therapeutic
Heat & Massage
— or —
NEW
HeatWave Technology



Shown in Coffee Bean

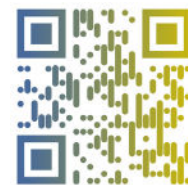
Model Number	PR510-SME	PR510-MLA	PR510-MXW
Size	Small/Med	Med/Large	Med/Wide
Class II Medical Device	YES	YES	YES
Weight Capacity	400 LBS	400 LBS	600 LBS
Positioning	MaxiComfort	MaxiComfort	MaxiComfort
Comfort Zone(s)	2	2	2
Twilight Technology	NO	NO	NO
ZG+	NO	NO	NO
Chaise Seat	YES	YES	YES
Pocketed Coil Seat	NO	NO	NO
Back Type	Biscuit	Biscuit	Biscuit
Removable Back Type	Bolt	Bolt	Quick Release
Head Rest Cover	Standard	Standard	Standard
Arm Rest Covers	NO	NO	NO
Overall Width	33.5"	38"	45"
Overall Height	41"	48"	48"
Seat Width	18"	20"	29"
Floor to Top of Seat	19"	20"	21"
Seat Depth	19.5"	21.5"	22"
Seat to Top of Back	27"	32"	32"
Seat to Top of Arm	7.5"	8.5"	7.5"
Distance Required from Wall Reclined	23"	26.5"	21"
Extension Reclined from Back of Seat to End of Foot Rest	43"	46"	44"
Life Time Warranty, Chair Frame, Lift Frame, Recline Mechanism	YES	YES	YES
Warranty on Electrical Parts	3 YR	3 YR	3 YR
Pro Rated Years 4 Thru 7	YES	YES	YES
Warranty on Mechanical Labor	3 YR	3 YR	3 YR
Warranty on Electrical Labor	1 YR	1 YR	1 YR
Hand Control Routing	Inside Pocket	Inside Pocket	Inside Pocket
Extra Pocket Option	Standard	Standard	Standard
Heat & Vibrating Massage Option	YES	YES	YES
HeatWave Technology Option	YES	YES	NO
Nirvana with HeatWave Option	NO	NO	NO
Articulating Headrest Option	NO	NO	NO
Power Adjustable Lumbar Option	NO	NO	NO
Foot Rest Extension Option	NO	YES	YES
Straight Lift Option	Standard	Standard	Standard
USB Charging Port	NO	NO	Right Arm
Battery Backup	9 volt	9 volt	Lithium-ion
SmartTek Diagnostic System	Standard	Standard	Standard

Comfort Zone™ by GOLDEN

Comfort Zones 1 & 2 work together to create individualized wellness positioning and comfort. Each Comfort Zone can be adjusted independently by using the exclusive AutoDrive hand control.



WE PATENTED COMFORT™



Scan with your smartphone camera to learn more about Comfort Zone by Golden.



Phone: 800-624-6374
Fax: 800-628-5165
www.goldentech.com



Literature is current at time of printing. Golden Technologies reserves the right to make changes to the product or literature at any time.

Sizes may vary depending on fabric, filling material, upholstery and carpet thickness. All measurements taken on concrete floor using levels and metal rulers.



Complies with
UL 73 and
CSA C22.2 No. 68



www.facebook.com/goldentechnologies

LIT-SHT-PR510, Rev.A 092625